

Received *Mar 14 1963* at 10:00 a.m.
Recorded *Mar 14 1963*
Plat Book *John W Campbell* Page 59
Signed *John W Campbell* Recorder, Guernsey County
Fee *3.00 pd*

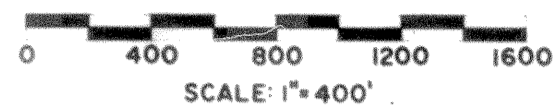
Note
This instrument prepared by the Ohio Department of Highways under the Supervision of Signed: *James J. Hultman*
Registered Engineer No. 14456
Registered Surveyor No. 3766
Resident Division Deputy Director
Date: *March 4, 1963*

Note This improvement has been declared a Limited Access Highway from Station 641+00 to Station 415+00 by action of the Director of Highways and recorded in Volume 47, Page 690, of the Directors Journal Pursuant to law.

Note This Plat includes part of the Location Plan for Gue-40-1186 as recorded in Plat Book 11, Page 36, of the Guernsey County Plat Records, and also includes and supersedes parts of the Location Plan for Gue-40-(1568-1692) as recorded in Plat Book 10, Page 36, & Gue-40-(1883-2290), S.H. 1 Sec.K(PT) as recorded in Plat Book 10, Page 34, of the Guernsey County Plat Records.

CENTER LINE SURVEY PLAT

GUE 40-17.37
WILLS TWP R.I.W, T.2N, U.S.M.L. 16 & 17 & SEC'S 8,13,14, & 15
GUERNSEY COUNTY

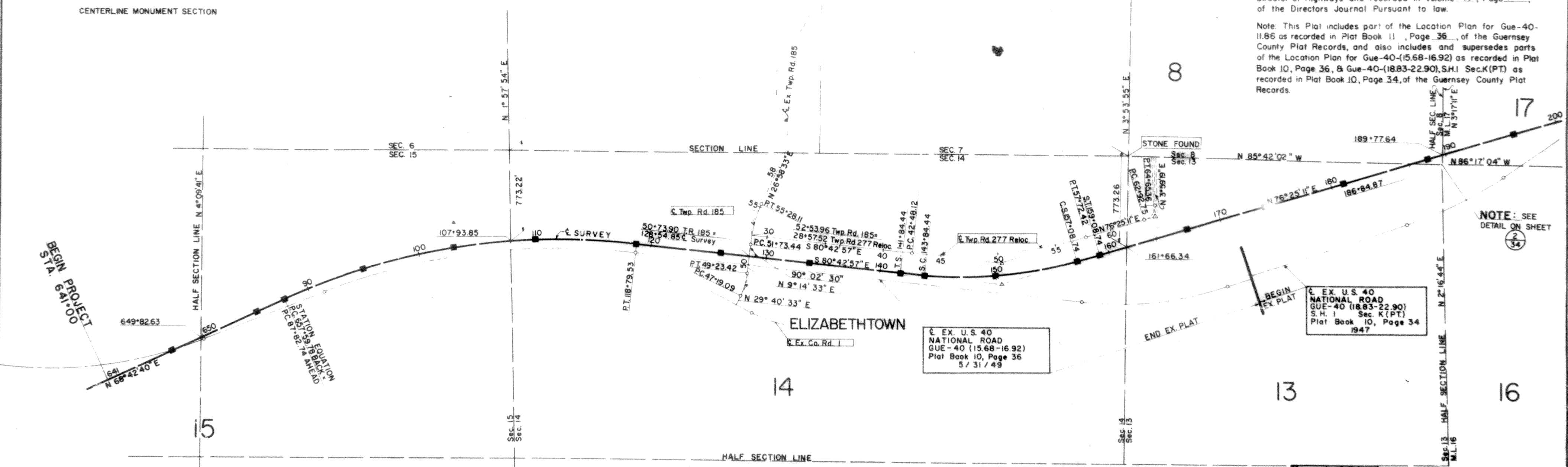


LIMITED ACCESS

GROUND ELEVATION

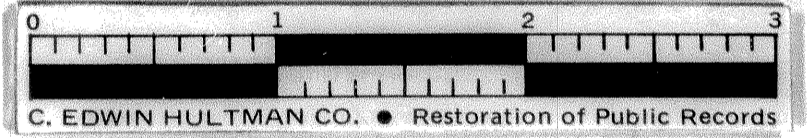


CENTERLINE MONUMENT SECTION



NOTE: SEE
DETAIL ON SHEET
2
34

EX. U.S. 40
NATIONAL ROAD
GUE-40 (1883-2290)
S.H. 1 Sec. K(PT)
Plat Book 10, Page 34
1947



Ĉ SURVEY CURVE DATA	Ĉ SURVEY CURVE DATA	TWP. RD. 185 CURVE DATA	TWP. RD. 185 CURVE DATA	TWP. RD. 277 RELOC. CURVE DATA	TWP. RD. 277 RELOC. CURVE DATA
PI. 103+68.95	PI. 150+56.95	PI. 48+22.35	PI. 53+52.20	PI. 50+20.55	PI. 63+92.78
Δ +30°34'23"	Δ +22°51'52"	Δ +20°26'00"	Δ +17°44'00"	Δ +22°51'52"	Δ +72°29'52"
D _c = 0°59'14"	D _c = 1°30'	D _c = 10°00'	D _c = 5°00'	D _c = 1°30'	D _c = 42°00'
R = 5803.58'	R = 3819.72'	R = 572.96'	R = 1145.92'	R = 3819.72'	R = 136.42'
L = 3096.79'	L _c = 1324.30'	L = 204.33'	L = 354.67'	L = 1524.30'	L = 172.61'
T = 1586.21'	L _g = 200'	T = 103.26'	T = 178.76'	T = 772.43'	T = 100.03'
E = 212.87'	θ _g = 1°30'	E = 9.23'	E = 13.86'	E = 77.32'	E = 32.74'
	T _g = 872.51'				
	X _g = 199.99'				
	Y _g = 1.75'				
	E _g = 77.76'				

■ MONUMENT SYMBOL
● MONUMENT ASSEMBLY SYMBOL

Monuments shall be set at the following locations on the Ĉ Survey

P.O.T.	647+00
P.O.T.	655+00
P.C.	87+82.74
P.O.C.	95+00
P.O.C.	103+00
P.O.C.	110+00
P.T.	118+79.53
P.O.T.	126+00
P.O.T.	133+75
T.S.	141+84.44
S.C.	143+84.44
P.O.C.	150+00
C.S.	157+08.74
S.T.	159+08.74
P.O.T.	167+00
P.O.T.	174+00
P.O.T.	181+00
P.O.T.	188+50
P.O.T.	196+00